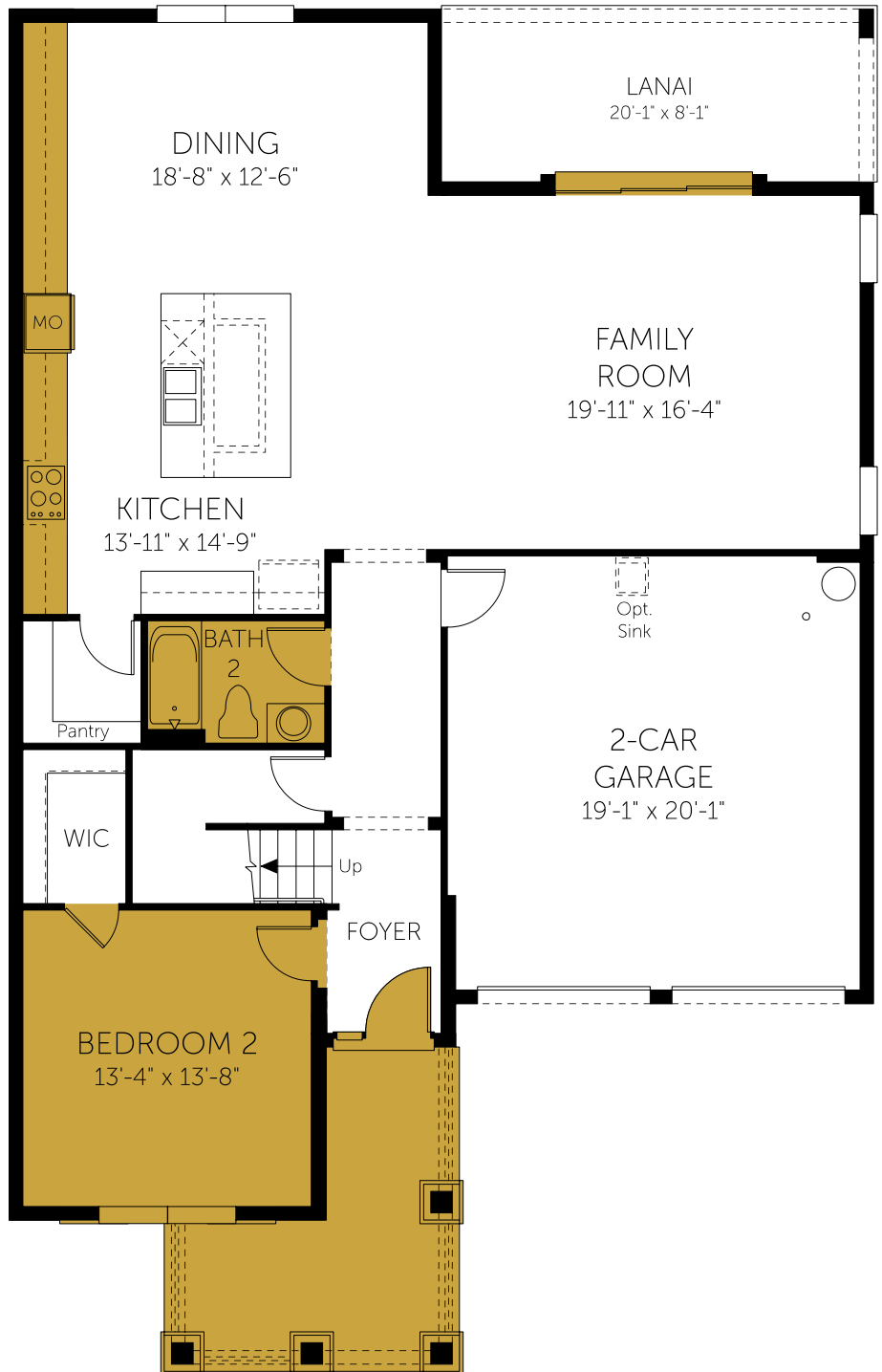




DREAM FINDERS HOMES

Biscayne

First Floor
4 Beds
3 Full Baths
2,718 Sq. Ft.



Selected Options:

Elevation C, 9' Sliding Glass Door, Gourmet Kitchen, Extended Kitchen Cabinets, Bedroom 2/Bath 2



DREAM FINDERS HOMES

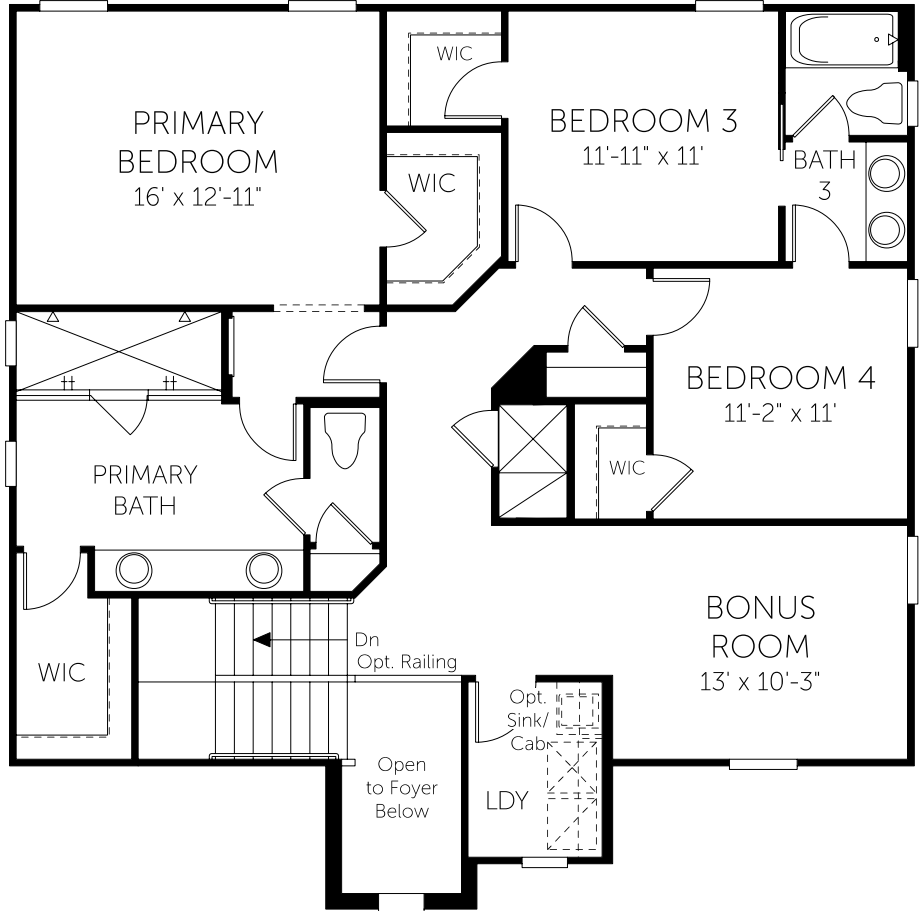
Biscayne

Second Floor

4 Beds

3 Full Baths

2,718 Sq. Ft.



No Options Selected