

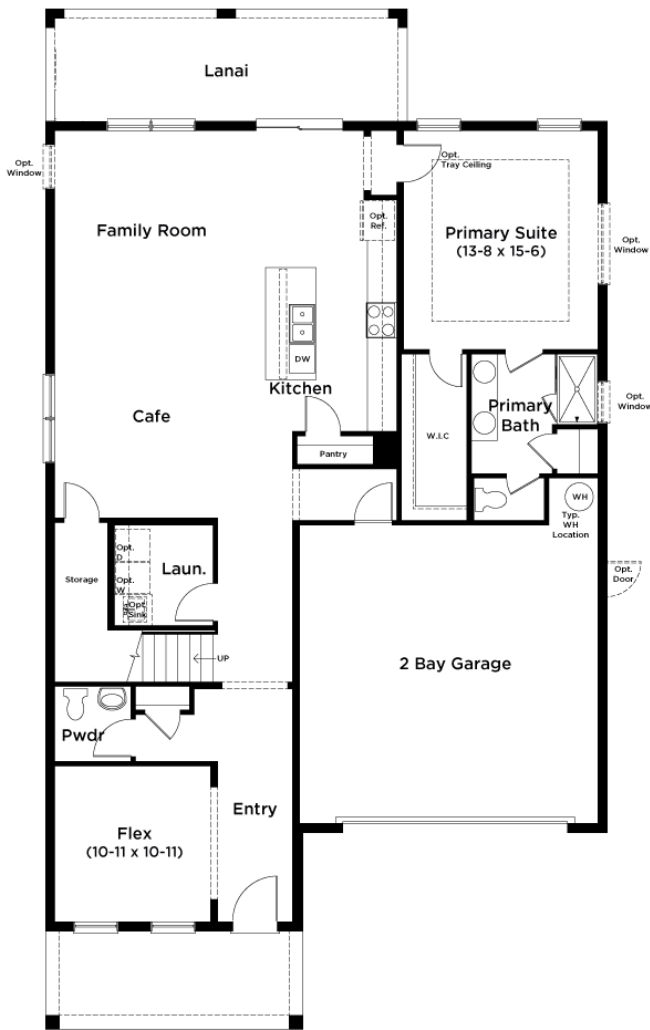
TRAILSIDE

THE SWEETGUM

4 - 5 Beds | 3.5 Baths | 2,760 - 2,766 Sq. Ft. | 2 Car Garage



FIRST FLOOR BASE PLAN



FIRST FLOOR OPTIONS



DRBhomes.com



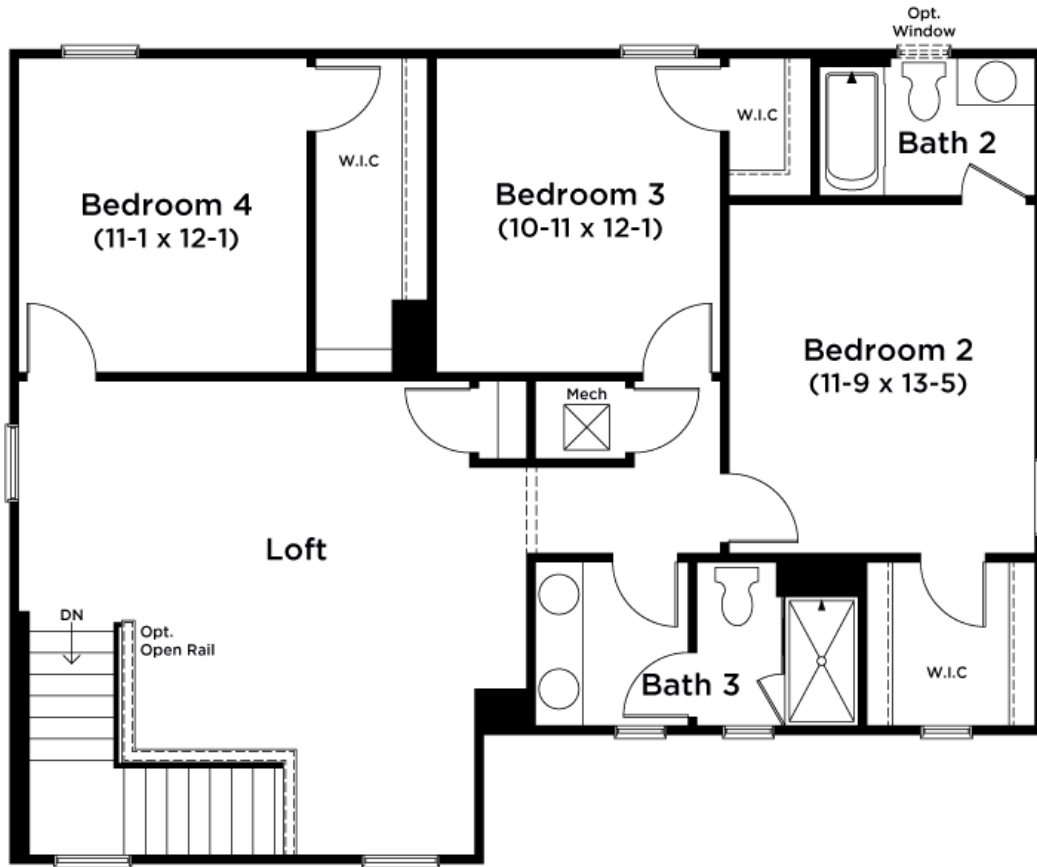
*This brochure is designed to show the general layout of specific floor plans. All images are artist renderings provided for illustrative purposes only and are not a part of a legal contract. Floor plans are not to scale, and may depict optional features that are not included in base home pricing and are not to be construed as contractual standards. Not all optional features may be shown. Floor plans and optional features (including, without limitation, specifications, materials, features, and pricing there of) are subject to change without notice. Floor plans and optional features offered vary by community and model of home. Accordingly, please check with a sales representative for your specific community to confirm whether particular floor plan is available, and what particular options are standard and what may be otherwise available. All dimensions/square footage are approximate; actual dimensions/square footage may vary. All views, landscaping, home siting and orientation/configuration, improvements and amenities are, as stated above, provided for illustrative purposes only.



THE SWEETGUM

407.270.2747

SECOND FLOOR BASE PLAN



DRBhomes.com



*This brochure is designed to show the general layout of specific floor plans. All images are artist renderings provided for illustrative purposes only and are not a part of a legal contract. Floor plans are not to scale, and may depict optional features that are not included in base home pricing and are not to be construed as contractual standards. Not all optional features may be shown. Floor plans and optional features (including, without limitation, specifications, materials, features, and pricing there of) are subject to change without notice. Floor plans and optional features offered vary by community and model of home. Accordingly, please check with a sales representative for your specific community to confirm whether particular floor plan is available, and what particular options are standard and what may be otherwise available. All dimensions/square footage are approximate; actual dimensions/square footage may vary. All views, landscaping, home siting and orientation/configuration, improvements and amenities are, as stated above, provided for illustrative purposes only.



THE SWEETGUM

407.270.2747

ELEVATIONS



COASTAL



CONTEMPORARY



CRAFTSMAN



FARMHOUSE



MODERN



TRADITIONAL

DRBhomes.com



*This brochure is designed to show the general layout of specific floor plans. All images are artist renderings provided for illustrative purposes only and are not a part of a legal contract. Floor plans are not to scale, and may depict optional features that are not included in base home pricing and are not to be construed as contractual standards. Not all optional features may be shown. Floor plans and optional features (including, without limitation, specifications, materials, features, and pricing there of) are subject to change without notice. Floor plans and optional features offered vary by community and model of home. Accordingly, please check with a sales representative for your specific community to confirm whether particular floor plan is available, and what particular options are standard and what may be otherwise available. All dimensions/square footage are approximate; actual dimensions/square footage may vary. All views, landscaping, home siting and orientation/configuration, improvements and amenities are, as stated above, provided for illustrative purposes only.

